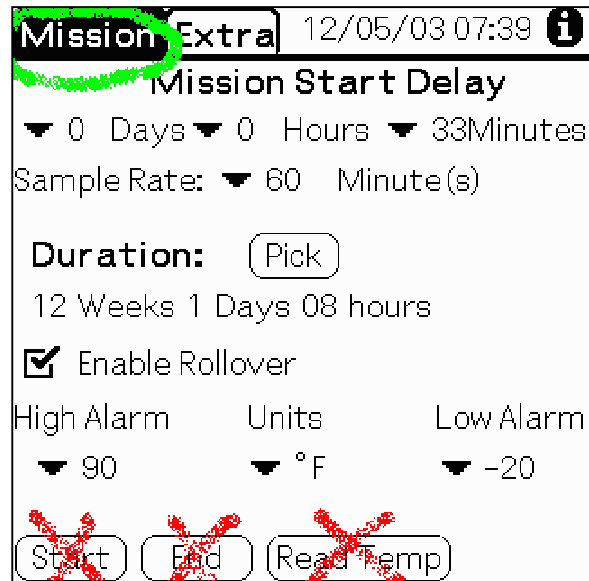


Read Thermochrons using CLIE iTemp Program

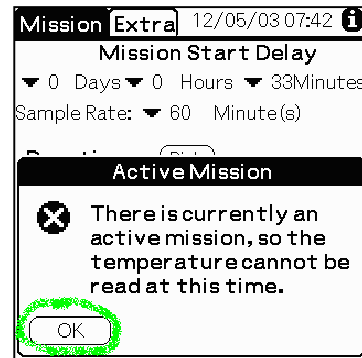
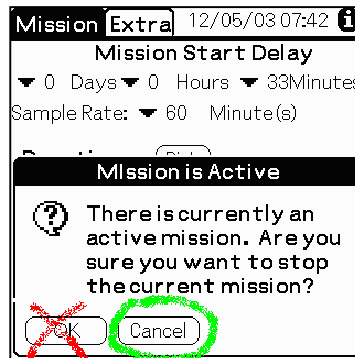
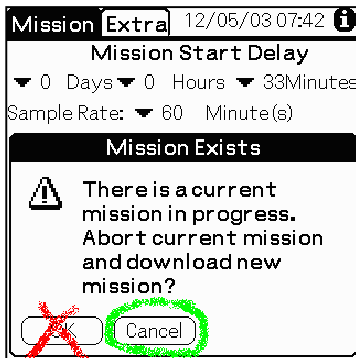


1) Clip the 'blue-dot' cable onto the bottom of the CLIE and attach to a thermochron button (clean if necessary).
 2) Turn the CLIE on. Start the iTemp program by using your finger to press the 'list' button (4th button along the bottom, circled in green) OR you can tap the iTemp program with your stylus. If the screen does not show multiple program icons, tap the 'home' symbol (circled in green, left edge). You may need to scroll the screen to show and tap the iTemp program.



3) On startup, the iTemp program shows the 'mission' dialog. **Changing the mission clears all data!** Generally you do not want to do anything in that screen except move on to logging the data. **Tap 'Mission' to continue.**



The following screens appear if you **do** tap 'Start', 'End', or 'Read', respectively. Generally you will want to press 'Cancel' UNLESS you really DO want to reprogram a thermochron button.



4) Once 'mission' is tapped on the top/menu line of the mission dialog (as circled in green on the previous page) the 'view' menu choices will 'pop-down'. Tapping 'logs' on the 'view' menu (circled in green on leftmost image below) will cause a download of data from a thermochron to be attempted. If cable has not been attached or the 'blue dot' connection has not been attached to a thermochron button, one of the error screens in the middle columns below will show (after fixing the problem, press 'OK' to continue).

<p>View Info</p> <p>Status /S Start Delay</p> <p>Histogram /H 33 Minutes</p> <p>Alarms /A minute(s)</p> <p>Logs /L</p> <p>Mission /M</p> <p>Review /R</p> <hr/> <p>Power Off</p> <p>Find</p> <p>High Alarm Units Low Alarm</p> <p>▼ 90 ▼ °F ▼ -20</p> <p>Start End Read Temp</p>	<p>Log Data</p> <p>Missing Hardware ⓘ</p> <p>✘ Unable to detect the DS9097U Serial Port Adapter, or the DS1402D Blue-Dot Receptor.</p> <p>OK</p>	 <p>Plug the 'blue-dot' cable into the CLIE (via the CLIE serial adapter cable).</p>
	<p>Log Data</p> <p>No Device ⓘ</p> <p>✘ Thermochron not detected! Make sure a thermochron is in the blue dot receptor.</p> <p>OK</p>	 <p>Attach a thermochron to the blue-dot cable.</p>

If the connections are made and the program STILL has problems, switching to another program and back to iTemp may help or you may need to reset the CLIE.

Once the data has finished downloading from the thermochron button to the iTemp program the most recent data will be displayed. Buttons to control what to do with the data are also displayed. The data **STILL needs to be saved.**

Log Data		
Sample	Date/Time	Temp
218	12/04/2003 15:00	75.1
217	12/04/2003 14:00	75.1
216	12/04/2003 13:00	75.1
215	12/04/2003 12:00	74.3
214	12/04/2003 11:00	67.0
213	12/04/2003 10:00	68.0
212	12/04/2003 09:00	68.9
211	12/04/2003 08:00	68.0

Min **4.0** **Save** Export
Max **86.0** REFRESH Plot

5) A screen similar to the one on the left should appear.

Tap 'Save' on the 'Log Data' screen. The 'Save Mission' screen will appear. You must tap 'Save' again on the 'Save Mission' screen. Do not change the filename, where the data is saved, or the format.

Save Mission ⓘ

Mission Name: IT480B_031204_1512

Save to: Internal Mem MemCard

Date Format: ISO Default

0 saved Miss.

<- **Save**

6) When you have tapped 'save' on the 2nd screen you will see save progress displayed. After about 10-15 seconds a message which confirms that the save was completed is displayed.

Save Mission ⓘ

Mission Name: IT480B_031205_0740

Save to: Internal Mem MemCard

Date Format: ISO Default

Data Saved

ⓘ **The current Mission's data was saved successfully.**

OK

7) Press 'ok'.

Save Mission ⓘ

Mission Name: IT480B_031204_1512

Save to: Internal Mem MemCard

Date Format: ISO Default

0 saved Miss.

<- **Save**

8) At this point the data is saved to the memory stick and you can 'go back' to do other things with the iTemp software by pressing the '<--' button.

Save Mission ⓘ

Mission Name: IT480B_031208_1024

Save to: Internal Mem MemCard

Date Format: ISO Default

⊗ **This file already exists on the card. Please choose another name for your file.**

OK

If you tap 'Save' a second time on the 'Save Mission' screen you will get the message in the image on the left. Just press 'OK' and leave the 'Save Mission' screen by tapping the '<--' button. The file HAS been already correctly saved.



9) Finish by tapping the 'Home' icon and turning off the CLIE. Unclip the cable from the CLIE (to save power). Keep the CLIE warm until the next reading. Don't forget to recharge its batteries when you take the CLIE back inside.

Please contact me if you have any problems or questions.

Jim Zandlo
State Climatology Office
1991 Upper Buford Circle
St. Paul, MN 55108

Phone: 651-296-4214
Email: jzandlo@umn.edu

Moving data files to a PC



The SansDisk ImageMate USB Reader/Write for Memory Stick should be connected to a USB port on your computer. For Windows XP or 2000 just plugging the device in should make it ready for use. (For first time use on Windows 98 you may need to install drivers from the CD that comes with the reader.)

Establish a directory on the PC where you will archive the files downloaded from the Memory Sticks, for instance `D:\DigitSense\iTemp\dataIncoming` would work fine. Add a new subdirectory for each date on which a download is done, for instance the directory `D:\DigitSense\iTemp\dataIncoming\031221` for data you download on Dec 21, 2003 would make it easy to later copy or send just those files.



Remove the memory stick by briefly pressing in on the end of the (purple) stick and quickly releasing. The stick will pop part way out as shown here.

When you plug the stick into the reader you may get a messages about the establishment of a diskette connection. The memory stick should look like a removable disk in Windows Explorer on the PC. If the drive letter assigned is 'G:' then the files you want to copy off will be in `G:\PALM\DigitSense\iTemp`. The file names will look something like `IT61D9_031203_1227.csv` where the button number as well as the date and time of reading are all incorporated into the file name. Copy all the files to your computer archive (in a directory you have established as noted above). When you see that the files are in the archive directory on your computer, delete them from the Memory Stick.

To remove the memory stick from the SanDisk reader, click on the 'unplug' icon (a leftward-pointing green arrow above a memory stick image) that the reader has put on the 'tray' in the lower right-hand side of your computer screen. When the message appears to remove the stick, go ahead and simply pull it out and put it fully back into the CLIE memory slot (it should click into place and beep).

Email the downloaded files jzandlo@umn.edu OR copy the files to a diskette and mail to the State Climatology Office as soon as possible after reading thermochrons.